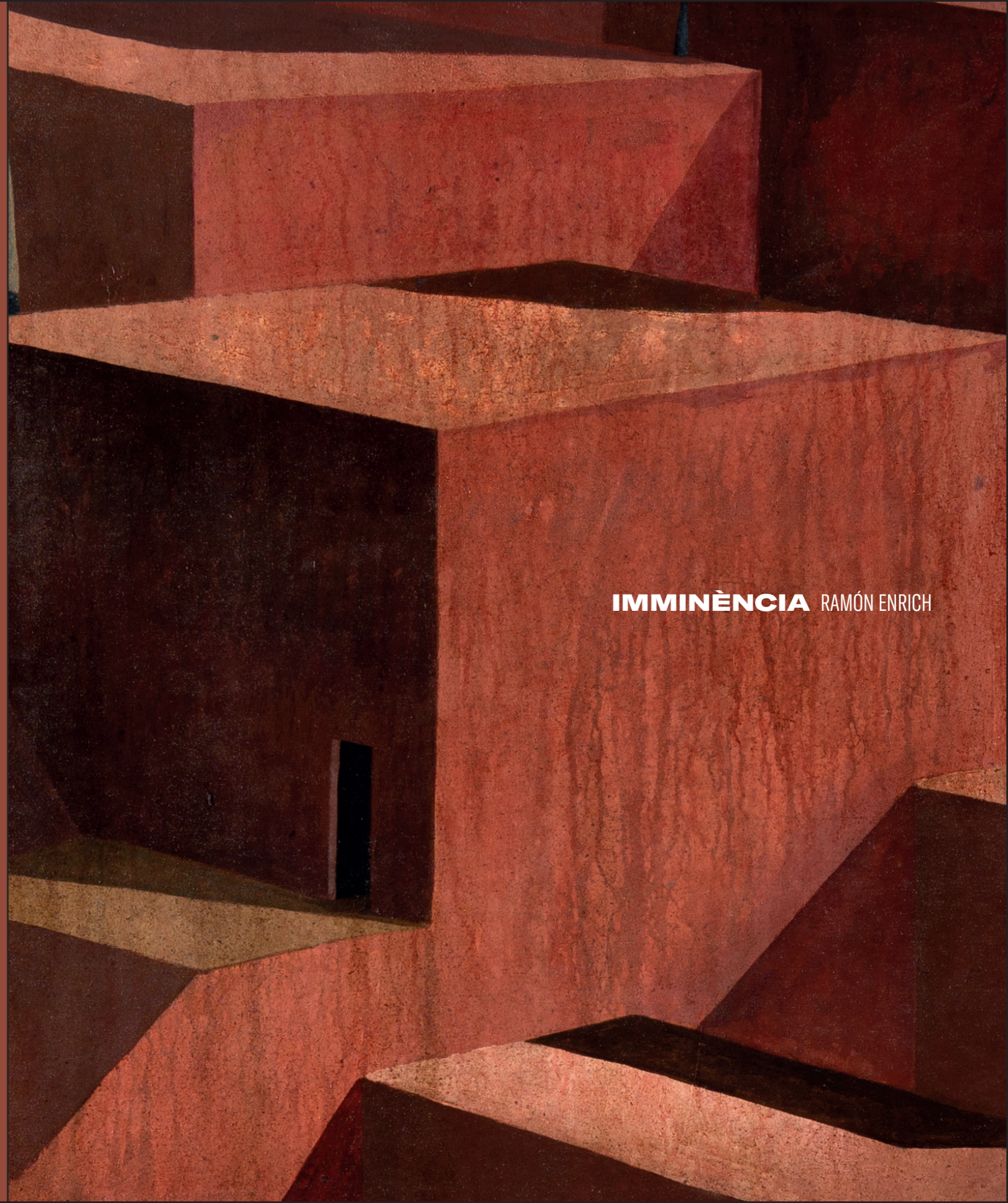


C A D O G A N

**IMMINÈNCIA** RAMÓN ENRICH



**IMMINÈNCIA** RAMÓN ENRICH

**C A D O G A N**



## IMMINÈNCIA

RAMÓN ENRICH

In this new body of work, Catalan artist Ramón Enrich harnesses his passion for architecture in his paintings of geometric and colourful landscapes. Inspired by rationalist and African architecture, Enrich creates landscapes of geometric shapes with a non-human reference point placing buildings at the heart of the canvases. Proposing a dialogue between architecture and landscape, Enrich totally transforms the barren, urban landscapes he depicts. Within a grid-like structure reminiscent of city planning, the artist's use of colour and space acquire great importance, transcending their representative function and creating instead an surreal, spell-binding atmosphere.

"Architecture and architectural painting allow me to play around with fiction and the mystery required to show the symbolic power of elements." Ramón Enrich

Enrich's paintings have a distinct syntax in their deceptive simplicity and formal strictness. Trees and buildings are reduced to spheres, cubes and cones, pushing the limits of abstraction. Always with a very particular and enigmatic atmosphere, full of references to Mediterranean culture, his paintings produce spatial conceptions where colour and space have no time or place.

**NOLLOC**

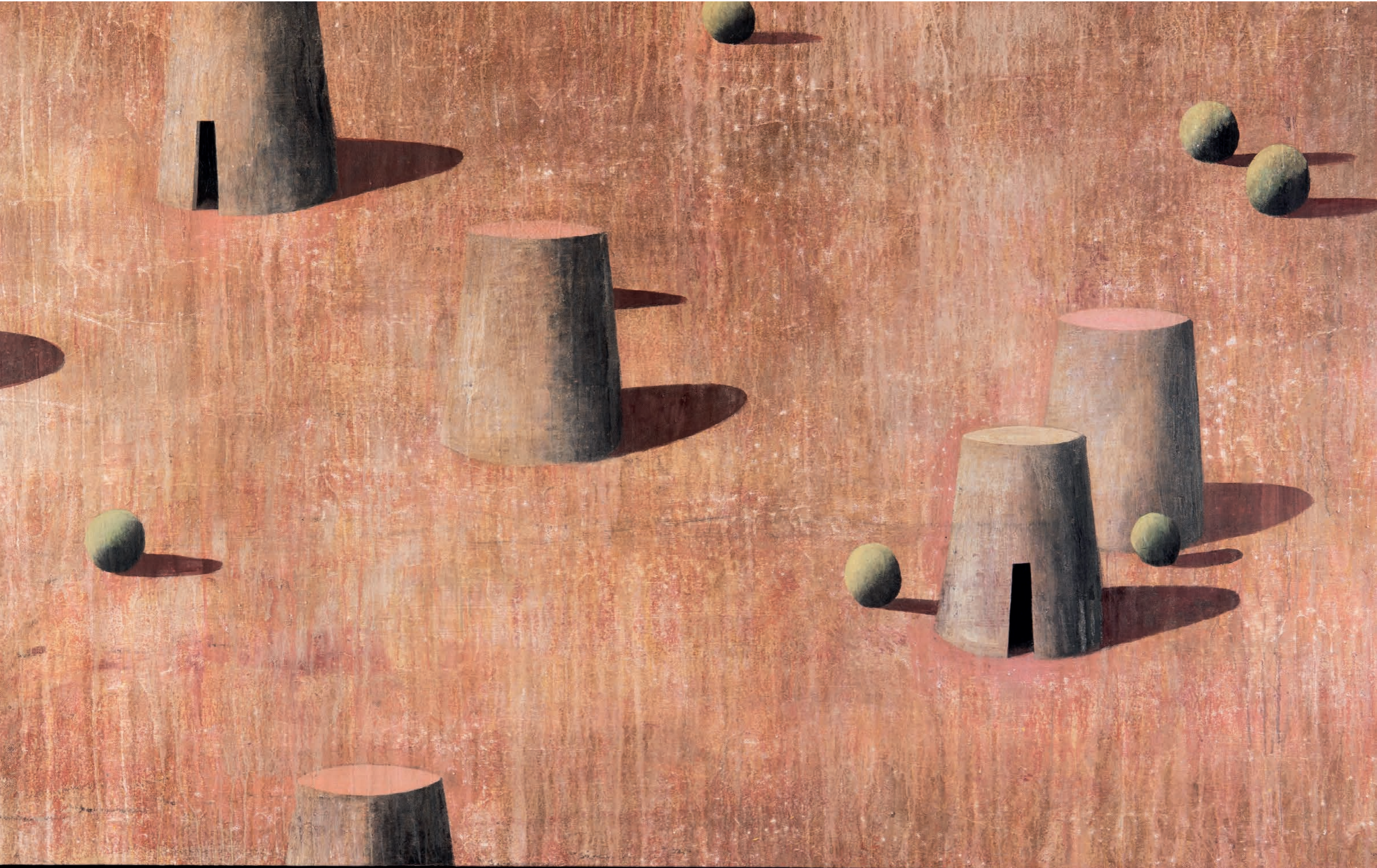
Oil on canvas  
112cm x 90cm



**LLUL**

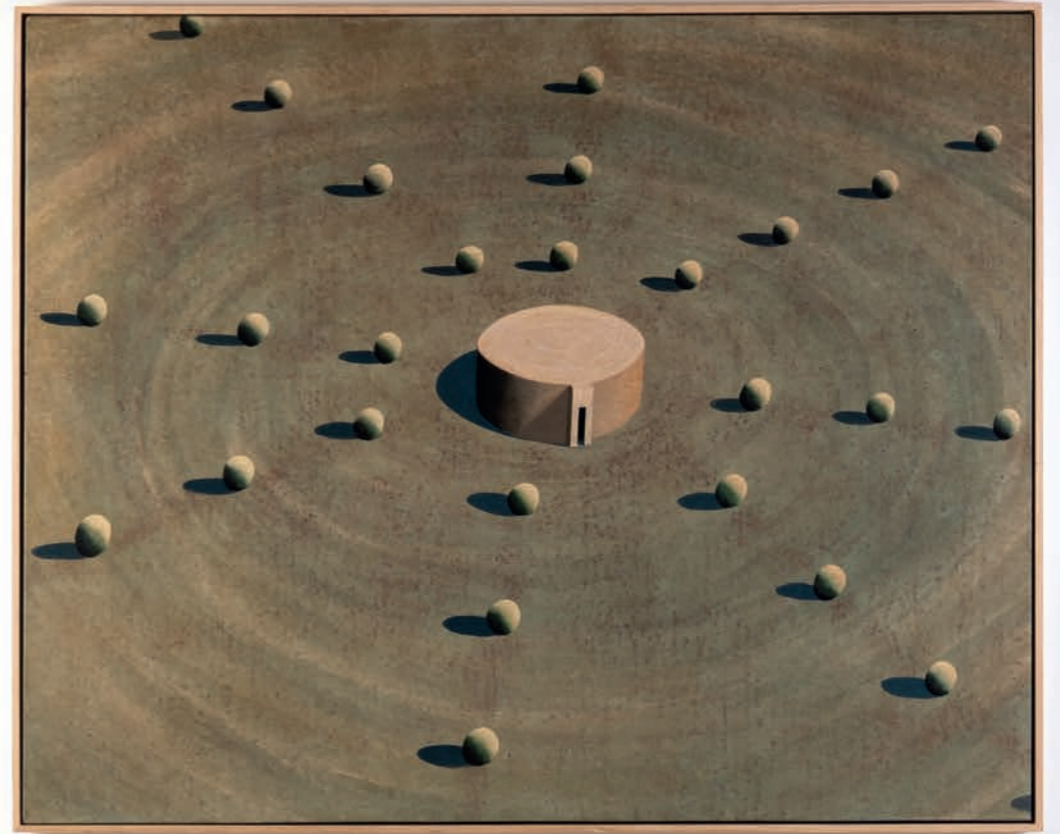
Oil on canvas  
190cm x 120cm





**ORGOM**

Oil on canvas  
130cm x 162cm







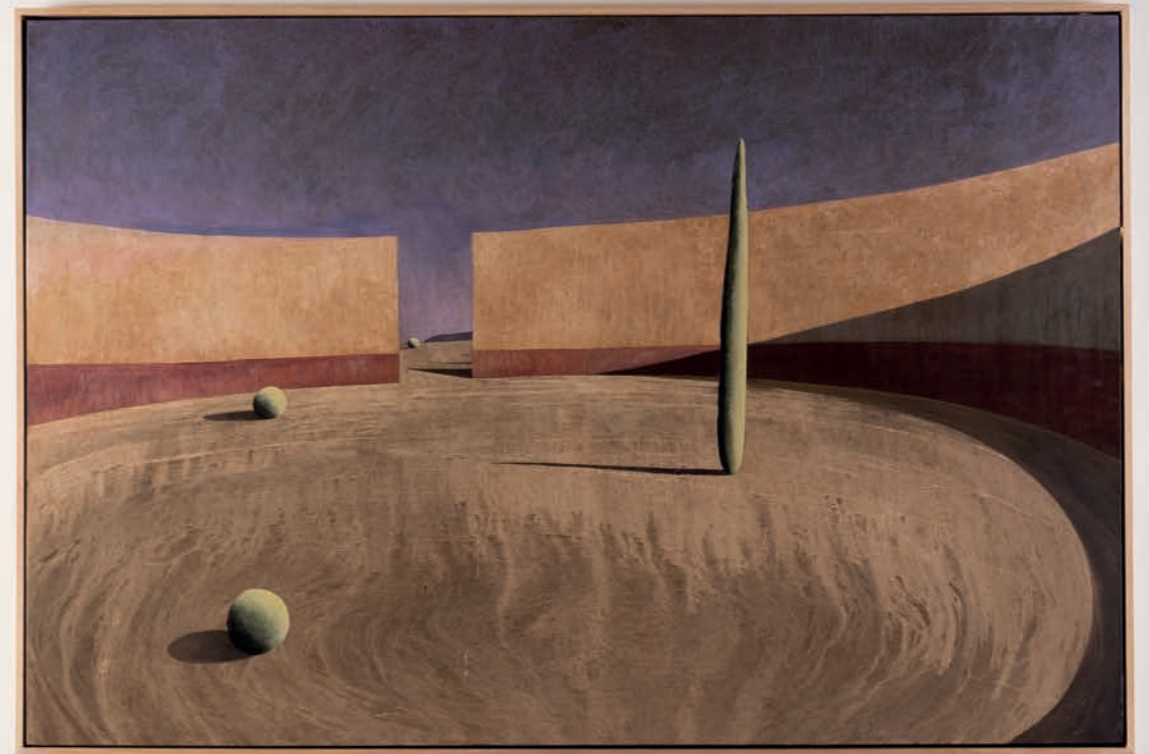
**ARCA 10**

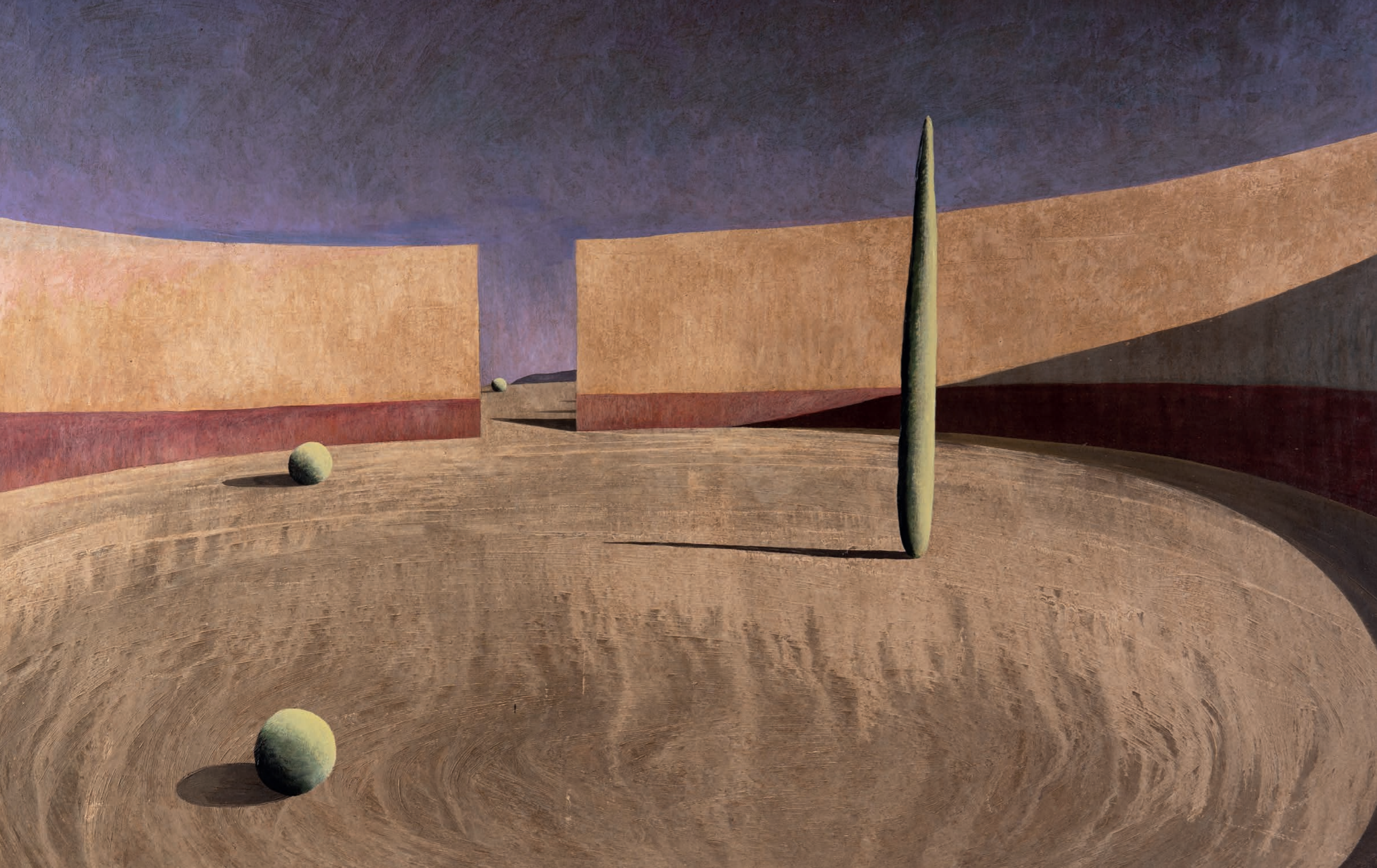
Oil on canvas  
130cm x 162cm



**GRAN RONDO**

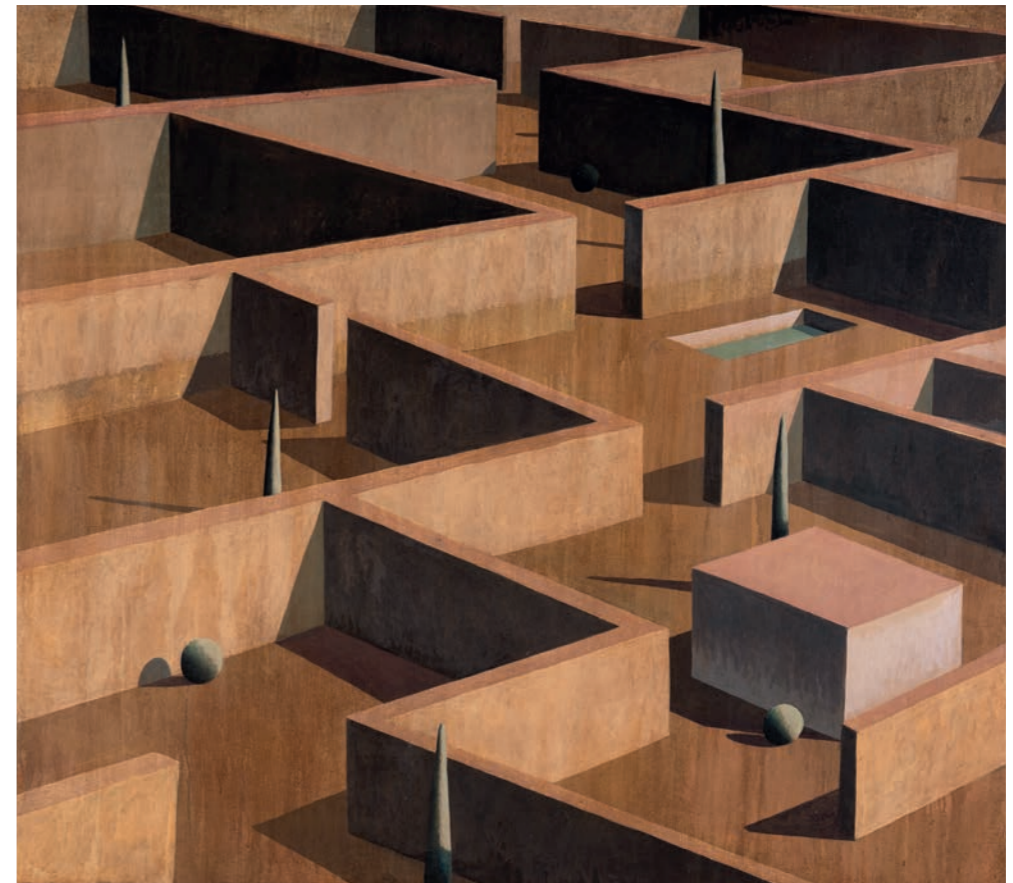
Oil on canvas  
180cm x 120cm





**LAB 12**

Oil on canvas  
120cm x 136cm



**LABERINT ESQUERDAT**

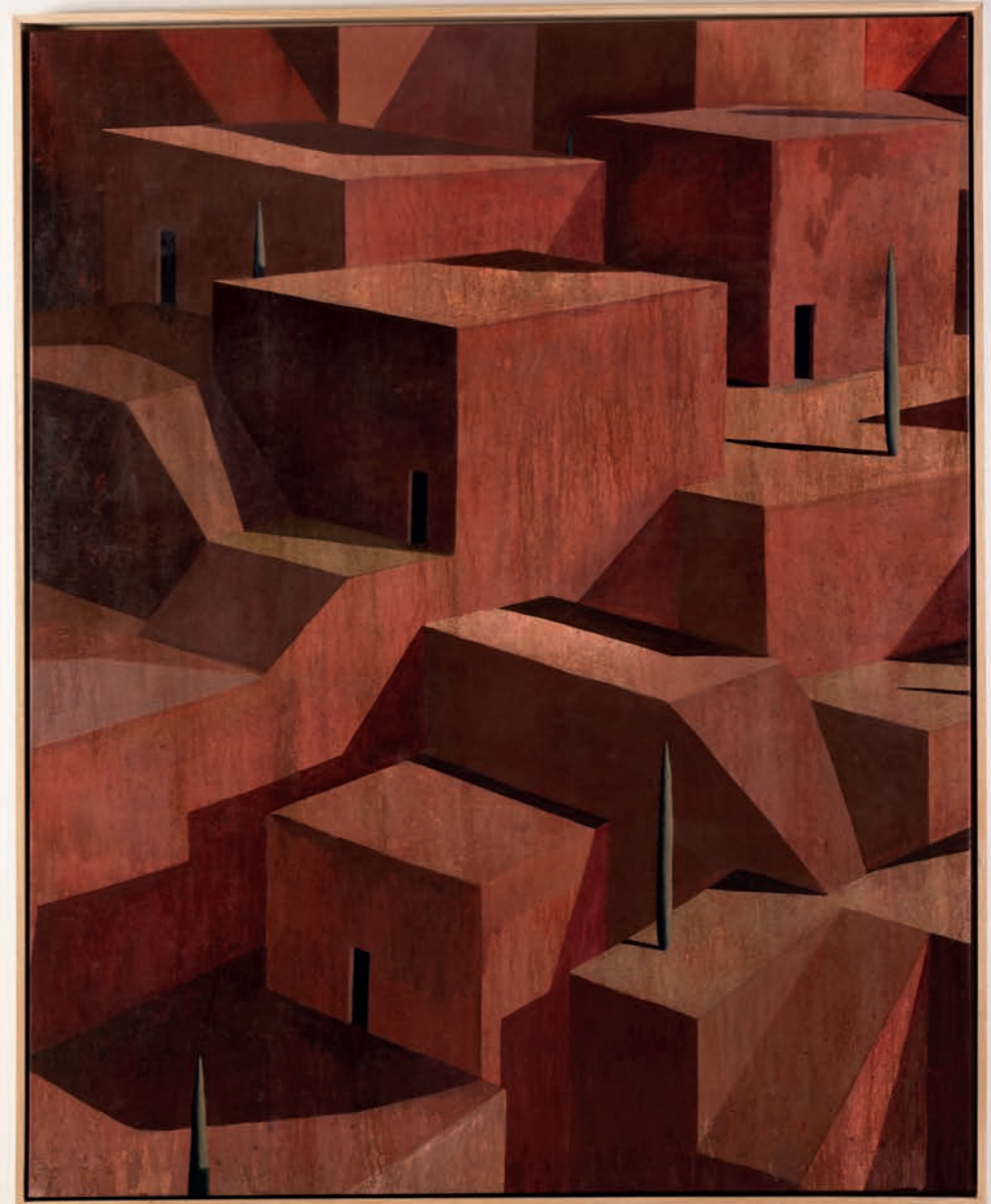
Oil on canvas  
190cm x 175cm





**LABERINT MONZÒ**

Oil on canvas  
130cm x 162cm



**SENGA**

Oil on canvas  
150cm x 135cm







**ANURP**

Oil on canvas  
100cm x 80cm





**LAV-PE**

Oil on canvas  
100cm x 80cm

**DAGOR 1**

Oil on canvas  
110cm x 125cm





**ERC**

Oil on canvas  
100cm x 80cm



**ACURZIO**

Oil on canvas  
50cm x 50cm



**AISSURP**

Oil on canvas  
45cm x 60cm





**AAV**

Oil on canvas  
50cm x 50cm







**ROND**

Oil on canvas  
40cm x 50cm

**CASA TOTEM**

Terracotta with lime patina  
38cm x 24cm



**CASA SIENA**

Carton-wood-oil patina  
31.5cm x 20cm x 39cm



**CASA TORTA**

Terracota clay-chamota  
18cm x 32cm x 13cm



**ROSE GREEN POOL**

Iron with oil patina and oxide  
31.5cm x 20cm x 39cm



**YELLOW POOL**

Iron with oil patina and oxide  
53cm x 34cm x 22cm





**BLUE ORANGE POOL**

Iron with oil patina and oxide  
48cm x 28cm x 19cm



## RAMÓN ENRICH

Ramón Enrich studied Fine Arts at the University of Barcelona, following which he was awarded numerous scholarships to study abroad. A great admirer of Donald Judd, he moved to Marfa, Texas in 1988 where Judd lived and worked, spending time at the Judd Foundation and the Chinati Foundation. He travelled to Los Angeles where he met Ed Ruscha and worked with David Hockney before settling in New York and assisting in Julian Schnabel's studio for a short time.

He has exhibited worldwide for almost 25 years and now lives and works in Igalada, Spain. His works are held in public and private collections worldwide, most notably the private collections of David Hockney, Norman Foster and Donald Judd.

